



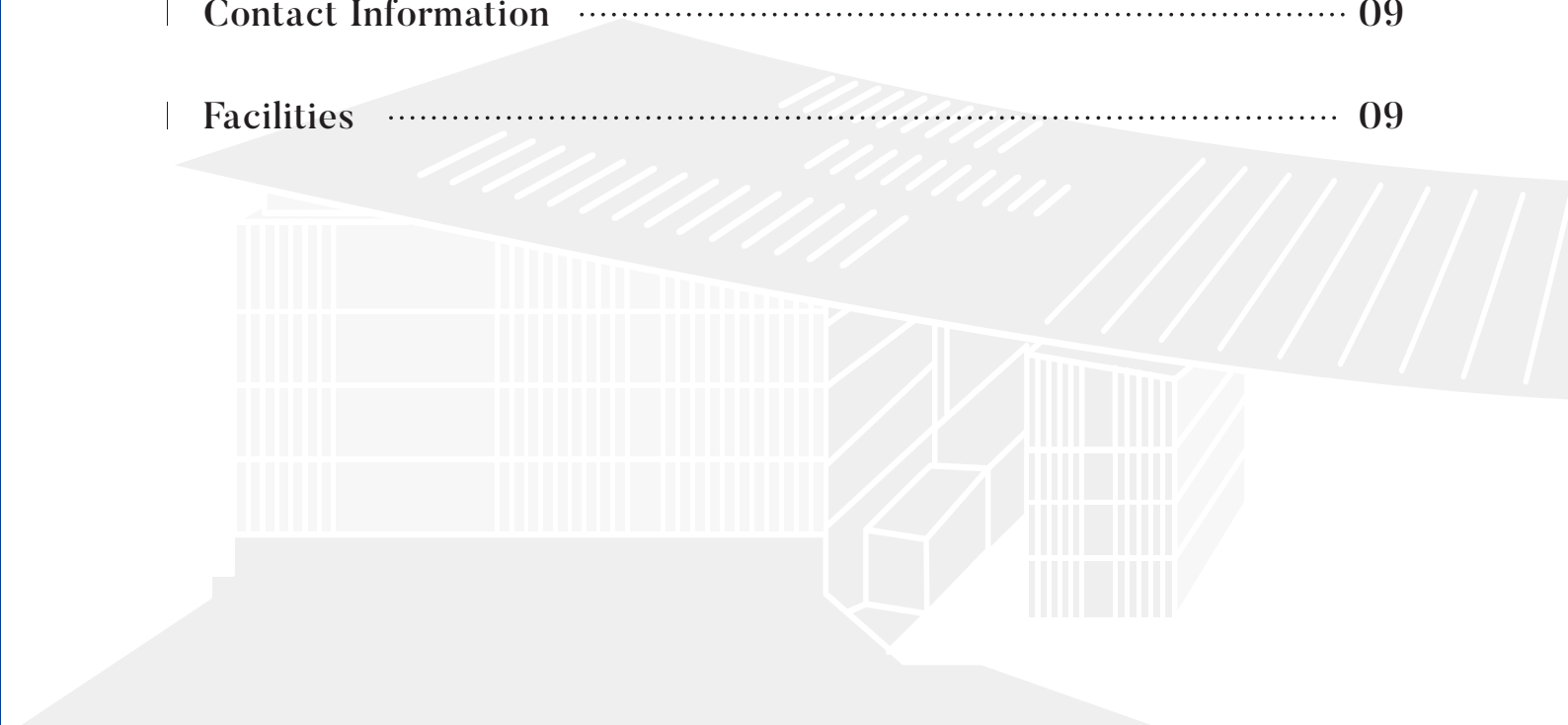
# 2025 MASTA & DOCSTA Admission Announcement

Regional Centre for Space Science and Technology Education  
in Asia and the Pacific(China) (Affiliated to the United Nations)  
Beihang University



# Content

- | Foreword ..... 01
- | Overview ..... 02
- | Graduate Programs Offered ..... 03
- | Why Space Technology Application Program in RCSSTEAP? ..... 04
- | Eligibility ..... 05
- | Fees ..... 05
- | Scholarship ..... 05
- | Required Documents ..... 06
- | Application and Admission Procedures ..... 07
- | Contact Information ..... 09
- | Facilities ..... 09





# Foreword

## Yunpeng Wang

President of Beihang University and Chairman of the Advisory Committee of RCSSTEAP

Since its establishment in 2014, the Regional Centre for Space Science and Technology Education in Asia and the Pacific (China) (Affiliated to the United Nations) has played an important role in promoting international exchange and cooperation in the field of space science and technology education, achieving remarkable results that are widely recognized. As the host institution for the center, Beihang University will further strengthen in-depth exchanges and cooperation with the United Nations Office for Outer Space Affairs (UNOOSA), member countries of the center, and relevant international organizations.

Our vision is to build the center into a platform for promoting international educational cooperation. Relying on the educational resources and policy advantages of Beihang University's Hangzhou International Campus, we will further explore the integration of science and education, as well as the collaboration between industry and education, to empower the training of international students and non-degree educational programs. We will continue to expand the scale and level of education, creating a "model" for international cooperation in space science and technology education.

With the joint efforts of all parties involved, we are confident that the center will play an increasingly important role in promoting international scientific and technological cooperation. Focusing on the frontiers of international space science and technology, we will conduct broader and deeper scientific cooperation and technical exchanges with relevant international organizations and member states in areas of mutual concern, such as deep space exploration, planetary exploration, and lunar exploration. In doing so, we will contribute our wisdom and efforts to humanity's exploration of the vast universe.



# Overview

United Nations Programme on Space Applications was established in 1971, and its aim is to enhance the understanding and subsequent use of space technology for peaceful purposes in general, and for national development, in particular, in response to expressed needs in different geographic regions of the world.

In order to transform the recommendations of the United Nations Programme on Space Applications into practical and operable programme, Beihang University (<https://ev.buaa.edu.cn>) has initiated the Master Programme on Space Technology Applications (MASTA) since 2006. And in 2013, the Doctoral Programme on Space Technology Applications (DOCSTA) was launched. In November 2014, the Regional Centre for Space Science and Technology Education in Asia and the Pacific (China) (Affiliated to the United Nations) (**RCSSTEAP** for short, <http://rcssteap.buaa.edu.cn>) was established as an education and training entity supported by the United Nations Office for Outer Space Affairs (UNOOSA), which locates in the campus of Beihang University.

MASTA is an elaborately designed and intensive Master programme for students who are interested in exploring the mysterious universe. This application-oriented programme focuses on both knowledge acquisition and operational training. While DOCSTA focuses on training participants with solid theoretical knowledge and systematic expertise in the field of space technology applications. MASTA&DOCSTA aim to deliver "International, Interdisciplinary, Intercultural, Innovative, Identical (5I)" education and provide a powerful platform for scholars and professionals to obtain more opportunities for communicating and experiencing the space technology practice in China.

**The educational fields of MASTA Programme in 2025 include Remote Sensing and Geographic Information System (RS&GIS), Global Navigation Satellite Systems (GNSS), Micro-satellite Technology, and Space Project Management.**

Doctoral Participants are expected to have the ability to conduct the independent scientific research, explore applications or engage in professional careers in related fields, and the educational fields of **DOCSTA Programme in 2025 include Remote Sensing and Geographic Information System (RS&GIS), Global Navigation Satellite Systems (GNSS), and Micro-satellite Technology.**

Candidates are expected to have a profound grasp and understanding of new technology and development in space science technology and applications. They are required to finish the dissertation with high practicability and application prospects.

Lectures are conducted in English. The thesis for project practice is required to be written in English.

Participants will be awarded with the Graduation Certificate of Beihang University when fulfilling the required credits and passing the thesis defense, and obtain the Master's/Doctoral Degree Certificate of the People's Republic of China after pass the examination of The Academic Degree Evaluation Committee.

The faculty team consists of professors and scholars from both domestic and international universities and institutions, as well as many experts from business sectors.

For more details, please visit our website: <http://rcssteap.buaa.edu.cn/kjkjyev/Education.htm>

# Graduate Programs Offered

We offer several Space Technology Application graduate programs. Below is a brief overview of our flagship programs in 2025:

1. MASTA of Space Technology Application in Remote Sensing and GIS
2. MASTA of Space Technology Application in GNSS
3. MASTA of Space Technology Application in Micro-Satellite
4. MASTA of Space Technology Application in Space Project Management
5. MASTA of Space Technology Application in Space Law and Policy
6. DOCSTA of Space Technology Application in Remote Sensing and GIS
7. DOCSTA of Space Technology Application in GNSS
8. DOCSTA of Space Technology Application in Micro-Satellite

For all Masta students, they will first finish a 9-month course study, and then after eligibility evaluation, most of them would continue another one year thesis research.

Phase I Course Study in China: 9 months (at Beihang University) (Leading to Course completion Certificate)			
	Module I	Module II	Module III
Formulation of an Individual Training Plan	Common Platform Courses	Major courses Academic Lectures Professional Visits	Pilot Project or Practical Courses
Phase II Thesis Research:12 months (Leading to Master's Degree in Engineering)			
Literature Survey and Thesis Proposal	Midterm Assessment	Academic Activities	Thesis Research

Program Highlights:

- Advanced courses in space technology, AI, machine learning.
- Hands-on projects in collaboration with industry leaders.
- Access to a network of alumni who are leaders in technology and engineering.

Education in RCSSTEAP emphasizes both hands-on experience and exploration of professional concepts and methods, and outreach activities, internships, and research collaborations will ensure students gain insights into real-world problems and applications. It is designed to provide students with the theoretical background and sufficient practical skills to start or advance their careers in space technology application fields.

# Why Space Technology Application Program in RCSSTEAP?

- **Distinguished Faculty:** Our faculty includes world-renowned scholars, researchers or managers who are experts in their fields. Several former directors of UNOOSA have delivered some courses in RCSSTEAP.
- **Innovative Curriculum:** Our programs are designed to provide a blend of theoretical knowledge and practical experience, ensuring students are well-prepared for the workforce or further research.
- **Global Perspective:** Based on the United Nations Programme on Space Applications, we offer a truly global learning experience, with students and faculty from all over the world, fostering cross-cultural collaboration and understanding.
- **Professional practices:** At RCSSTEAP, we value professional experiences and professional practices. With our wide collaboration network, our graduate students actively participate in many exchange programs, international conferences, and study tours.
- **Cutting-Edge Labs and Resources:** Our graduate students have access to the latest research tools, technologies, and labs in disciplines such as Remote Sensing, GNSS and Micro-satellite.
- **Collaborative Research:** We foster a culture of collaboration, with many students working alongside faculty on groundbreaking research projects. Recent projects have led to publications in many top journals.
- **Research Funding:** Beihang University provides ample research funding opportunities through UPS plan.
- **Alumni Network:** With over 400 alumni across more than 20 countries, our alumni network is a powerful tool for career advancement.
- **Internships and Co-op Programs:** Gain hands-on experience through internships and cooperative education programs with leading companies in your field.
- **International Cultural Activities:** Our campus regularly hosts cultural events that celebrate the diversity of our student body. These activities offer students the chance to learn about and experience other cultures while building lifelong friendships across borders.
- **Conferences and Workshops:** Attend and present at national and international conferences, where you can showcase your research and gain feedback from experts in your field.
- **Wellness and Support Services:** We offer comprehensive wellness programs, counseling services, and academic support to ensure our students thrive both academically and personally.



# Eligibility

Applicants must

- Comply with the laws and regulations of the People's Republic of China and Beihang University rules;
- Be a citizen of a country other than the People's Republic of China, and be in good health both mentally and physically;
- Be a bachelor's degree holder under the age of 35 when applying for MASTA;
- Be a master's degree holder under the age of 40 when applying for DOCSTA;
- Applicants should have some professional experience working in space technology industry or research institutes;
- Applicants are expected to have relevant English proficiency certificates, have good command of English and the ability to take courses in English;
- Applicants are supposed to have research background in relevant areas.

# Fees

- Application Fee: CNY 400
- Tuition Fees: CNY 35000/year for MASTA, CNY 42000/year for DOCSTA
- Medical Insurance: CNY 800/year
- Accommodation: Single room, CNY 800/month (not including costs like water, electricity, etc.)

Note: MASTA/DOCSTA programme is mainly for directional enrollment. Students who are interested to do self-sponsor, please visit website (<http://admission.buaa.edu.cn>) for further information.

# Scholarship

1. Applicants are welcomed to apply for the Chinese Government Scholarship (CSC Scholarship) at Beihang University. The Full Scholarship of CSC will cover the following items:

- Tuition fees
  - Free university dormitory or accommodation subsidy
  - Stipend: MASTA students: CNY 3000/month (2 years)  
DOCSTA students: CNY 3500/month (4 years)
  - Comprehensive medical insurance
- The scholarship does not cover international travel expenses

2. Applicants are also eligible to apply for the Beijing Government Scholarship and the Beihang University Scholarship.

# Required Documents

1. Application Form for Chinese Government Scholarship.
2. Copy of Passport Home Page. If the validity of the applicant's current passport does not meet the requirement (should be valid before September 2025), please apply for a new passport before submitting the application.
3. Notarized highest diploma. Documents in languages other than Chinese or English must be attached with notarized English translations.
4. Academic transcripts. Copies of academic records from first to last semester during the undergraduate, graduate (if any) shall be provided. These transcripts shall be issued and sealed by the attending university's academic affairs office, graduate school, or student management department. They can be in Chinese or English, but must be attached with notarized English translations if they are in foreign languages other than English.
5. Language qualification certificates. Applicants shall provide relevant English proficiency certificates. The minimum scores for different English tests are: IELTS 6.0 Academic, TOEFL 90, or Duolingo 105, within 2 years. It is recommended to submit GRE scores at the same time (if any).
6. A study plan proposal. A study plan written in Chinese or English shall contain more than 1,000 characters or words.
7. Recommendation letters. Two letters of recommendation (written in English) from professors or associate professors shall be submitted.
8. A photocopy of the Foreigner Physical Examination Form completed in English (the original copy shall be kept by the applicant). The form is designed by the Chinese quarantine authority and can be obtained from the dispatching authority. The physical examinations must cover all the items listed in the Foreigner Physical Examination Form. Incomplete records or those without the final suggestion or signature of the attending physician, the official stamp of the hospital, or a sealed photograph of the applicants are invalid. Please select the appropriate time to take a physical examination as the result is valid for only 6 months.
9. Non-criminal record report. The applicant shall submit a valid certificate of Non-Criminal Record issued by the local public security authority, usually issued within 6 months prior to the submission date of the application.
10. Integrity Commitment letter.
11. Resume, Detailing relevant work experience, research, and extracurricular activities.
12. The List of Application Documents and Post Address confirmed.

Visit <http://is.buaa.edu.cn/en/info/1416/3091.htm> to access the templates of relevant application materials.

## Please notice:

- Uploaded supporting documents must be clear, authentic, and valid. -Documents should be in English or Chinese or attached with translations in English or Chinese.
- Your document review process will only start after your application fee receipt submitted in the system or you have successfully paid in the application system directly.

**-If there are any authenticity issues with your application materials, your application qualification will be canceled immediately.**

# Application and Admission Procedures

- All applicants shall submit your application in both Chinese Government Scholarship Information System (<https://studyinchina.csc.edu.cn/>) and Beihang International Student Online Application System (<https://admission.buaa.edu.cn/>).
- "Applicants must carefully select the correct Program Category, 'TYPE B,' and accurately enter Beihang University's Agency Number, '10006,' in the Chinese Government Scholarship Information System".
- If you apply for RS&GIS, GNSS and Micro-satellites Technology, the specialty should be chosen as "Space Technology Applications".  
If you apply for Space Project Management, the specialty should be chosen as "Business Administration" in Chinese Government Scholarship Information System and "Business Administration (Space Project Management)" in Beihang International Student Online Application System.  
If you apply for Space Law and Policy, the specialty should be chosen as "Law" in Chinese Government Scholarship Information System and "Law (Space Law and Policy)" in Beihang International Student Online Application System.
- The instruction language should be chosen as "English".
- Beihang will organize qualification review, preliminary interview, and academic review. Interview will be online, through Tencent meeting platform.
- The admission notices and relevant documents will be sent to the successful candidates via e-mail or express delivery.
- Application Deadline: Mar.15, 2025

## Please notice:

**\*Please ensure that the application information submitted and the documents uploaded in the two systems are consistent. Otherwise, your application will be treated as invalid and incomplete.**

\*The application progress and admission results and other relevant notices will be released in stages through Beihang International Student Online Application System (<https://admission.buaa.edu.cn/>) and the email box you filled in when applying. Please log on the website, application system and email box regularly to stay up to date.

\*Beihang university never authorize any intermediary agency to carry out scholarship enrollment. Please do not trust paid services and false promises from intermediaries.

\*Hard copies of the documents are not required.

For more information, please visit the official website of "Study at Beihang"-Chinese Government Scholarship-High-level Postgraduates Program at Beihang University:

[http://is.buaa.edu.cn/en/jxj/cgs\\_hlppbh.htm](http://is.buaa.edu.cn/en/jxj/cgs_hlppbh.htm)

# How to pay the application fee

**Application fee: CNY 400 or USD \$70**

There are two options for your payment.

1. Pay through the PAYEASE online payment function in the application system.
2. Pay by bank remittance service.

Beneficiary info for Application Fee:

## For USD

Beneficiary Name: BEIHANG UNIVERSITY

Account No.: 0200006209026400229

Beneficiary Banker's Name: Industrial and Commercial Bank of China, Beijing Dongsheng Road Branch, Beijing, China

Swift Code: ICBKCNBJBJM

## For CNY

账户名：北京航空航天大学

账号：0200006209026400229

收款行：中国工商银行北京分行东升路支行

## Please notice:

- Application Fee paid via WeChat/ Alipay/ PayPal or in cash will not be accepted.
- If you pay by bank remittance, please write down applicant's name and passport information on the receipt before you submit it into application system.
- Please double check by yourself if you need to pay the application fee or not in advance. Payment is not refundable.
- Beihang fresh graduates do NOT need to pay the application fee.





# Contact Information

## Beihang University

- Ms. Guo Yuanyuan, Ms. Tang Qian
- Telephone:** +86-10-82339734, +86-10-82316195
- E-mail:** [masta@buaa.edu.cn](mailto:masta@buaa.edu.cn)
- Website of RCSSTEAP:** <http://rcssteap.buaa.edu.cn>
- Website of China Scholarship Council:** <http://studyinchina.csc.edu.cn>
- Beihang International Student Online Application System:** <https://admission.buaa.edu.cn>

## APSCO

- Ms. Haoyang Lyu (Lily)
- Telephone:** +86-10-63702677 Ext.406
- E-mail:** [hy.lyu@apsco.int](mailto:hy.lyu@apsco.int)
- Website of APSCO:** [www.apsco.int](http://www.apsco.int)

# Facilities

All Masta and Docsta students in RCSSTEAP study in Hangzhou international campus of Beihang University since 2024. The campus is designed to provide a world-class educational environment, equipped with state-of-the-art facilities for teaching, research, and student life.

Hangzhou, the capital of Zhejiang Province in eastern China, is known as one of China's most picturesque cities, and is often referred to as 'Paradise on Earth' due to its serene landscapes, traditional gardens, and ancient temples. Hangzhou is famous for West Lake (Xi Hu), a UNESCO World Heritage site, its silk production, and Longjing tea.

In addition to its natural beauty, Hangzhou is a hub for technological innovation and e-commerce, home to the headquarters of Alibaba Group, one of the world's largest e-commerce companies. It has earned the reputation of being a "Silicon Valley of China" due to its thriving tech ecosystem and the presence of a growing number of startups and digital enterprises.



Overview Map of the Whole Hangzhou International Campus of Beihang University



Main Building



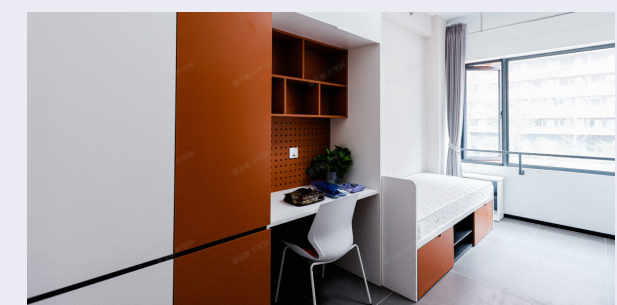
Student Residence Hall



Research laboratory building



Dining hall



Dorm room



The West Lake



The Grand Canal





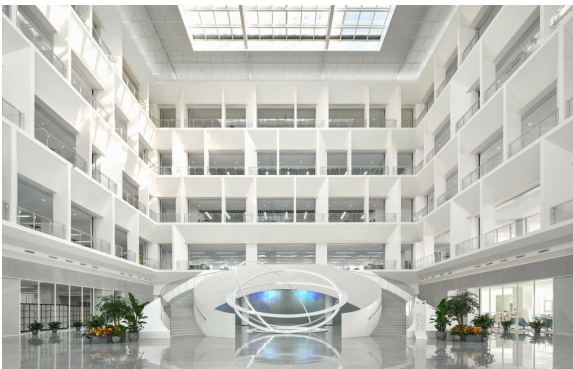
Classroom



Basketball Gymnasium



Badminton hall



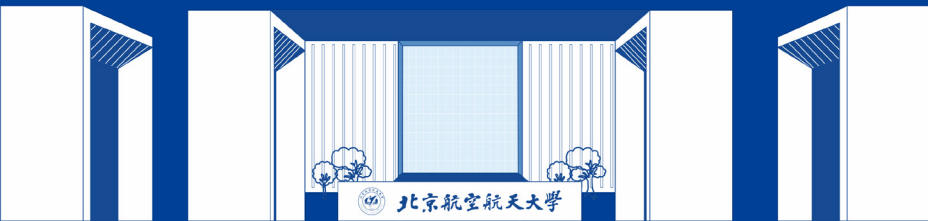
Library



Computer lab



Graduate laboratory



# We Look Forward to Welcoming You!

At RCSSTEAP in Beihang University, we are committed to providing a supportive and enriching environment for all our graduate students. Apply today and take the next step toward your professional and international future.